

Fazenda São Nicolau

Carbon sink, biodiversity, inclusive projects

Southern Amazonia

2026



The Fazenda - overview

Located in Brazil, in the North-West of Mato Grosso, in the municipality of Cotriguaçu, **Fazenda São Nicolau is home to the Peugeot-ONF Forest Carbon Sink project.**

With a total area of **10 287 ha**, the Fazenda consists of approximately **8 000 ha of native amazonian forest and 2 000 ha of degraded pastures.** On these degraded soils more than **2.5 million trees** of 50 native species have been planted since 1999, thus providing the regrowth of forest cover.

After 25 years of the project, more than **700,000 tons of CO2eq (VCS/VERRA) have been absorbed** by the plantations, contributing to the fight against climate change. At the end of 40 years, the balance should exceed 1 million tons.

Even today, around **50,000 plants of native species are produced each year** by the Fazenda nursery for the restoration of degraded land and agro-ecological transition.



The Fazenda – overview

Socio environmental co-benefits

In addition to its environmental aspect of carbon sequestration, the Fazenda Sao Nicolau develops **educational activities** around the role of the forest, builds **economic and social partnerships** with the local population to enable them to live from the forest and ensures the **preservation of the biodiversity**.

It hosts **Brazilian and international research** on fauna and flora, it serves as a model farm for good agro-forestry practices in the Amazon and as a tree nursery for other plantations in the area.



A biodiversity hotspot, the Fazenda is home to more than **2,000 species of fauna**, including **40 new to science**.

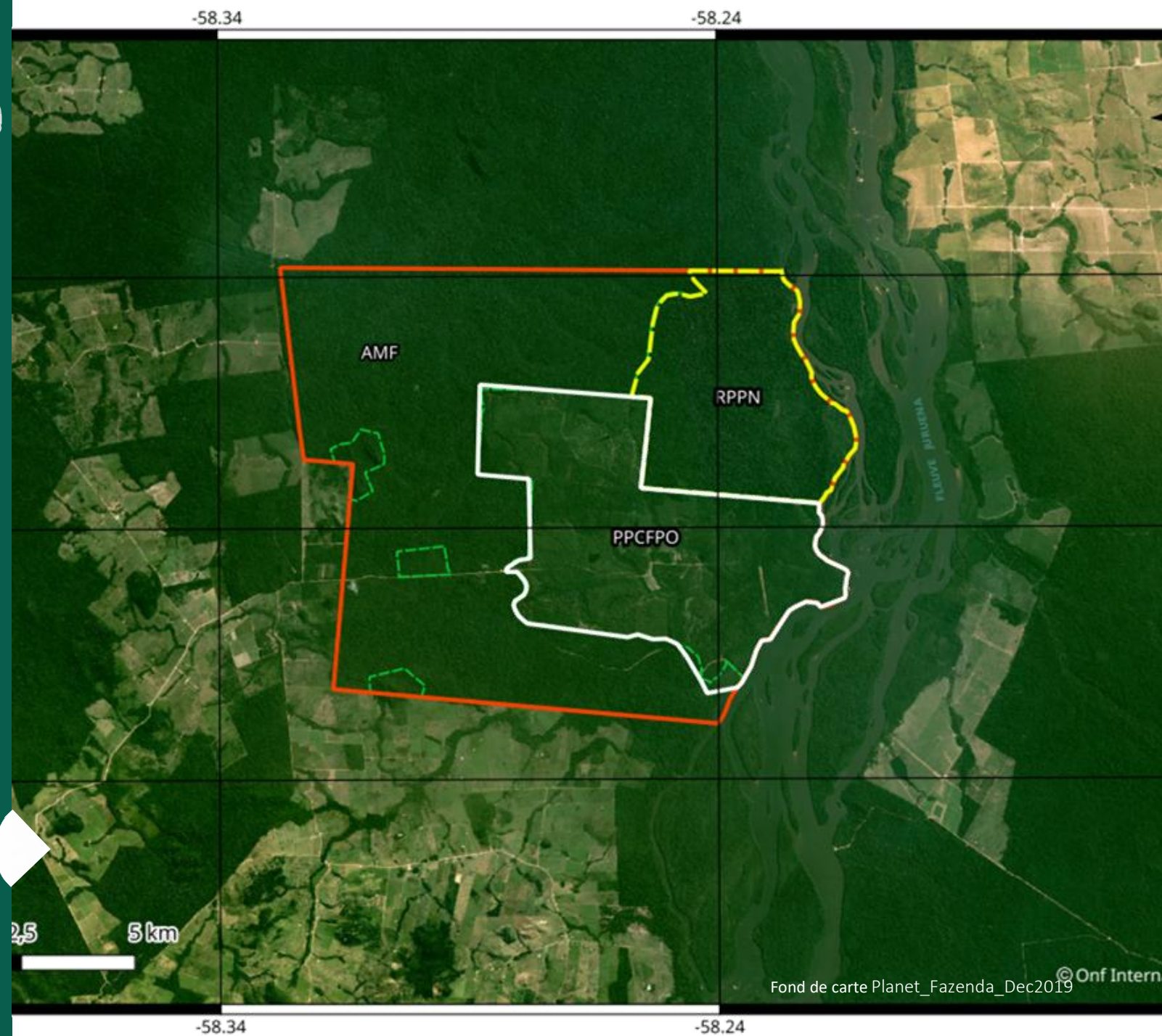
1,800 ha of natural forest are protected as an integral reserve.

The Fazenda Land use



Total area: 10,287 ha

-  Fazenda São Nicolau – 10,287 ha – Sustainable development / large projects
-  RPPN – Integral reserve – native forest – 1,815 ha – biodiversity, research, education
-  PPCFPO – Forest Carbon sink VCS certified – Reforestation with 50 native species – 1,981 ha
-  AMF – Natural forest under sustainable management plan (timber + Brazilian nuts) - 5,250 ha



Legally compliant land tenure & approved CAR

A carbon sink

In the heart of Amazonia





Carbon sink

Verifications and credits

Credits

VCS Certification (Verra)

« **Multi-species reforestation in Mato**

Grosso, Brazil » ID 665

Project registered until 2038

Permanent ARR credits (A/R Large-scale

Consolidated Methodology AR-ACM0003 / Version 02.

Afforestation and reforestation of lands except wetlands)

Credits considered as « **premium** »

Buffer release (may 2025)

V1	8,114 credits
V2	5,078 credits
V3	1,525 credits
Total	14,717 credits released



3 Verifications

1st verification

nov. 1999 to apr 2009

↳ **112 kt + 28kt** (buffer)

2nd verification

apr. 2009 to oct. 2015

↳ **254 kt + 28 kt** (buffer)

3rd verification

nov. 2015 to oct. 2020

↳ **75 kt + 10 kt** (buffer)

4th verification

nov. 2020 to aug. 2025

↳ **ongoing (100k credits expected)**

Future verifications

2025 until 2038

↳ **Around +275 kt**

Unique large scale reforestation project with more than

- 25 years experience
- 50 native species
- 90% of native species
- CO2 seq: more than 15T/ha/year
- Estimate for 2038 : more than **1 million tons of CO2 sequestered**

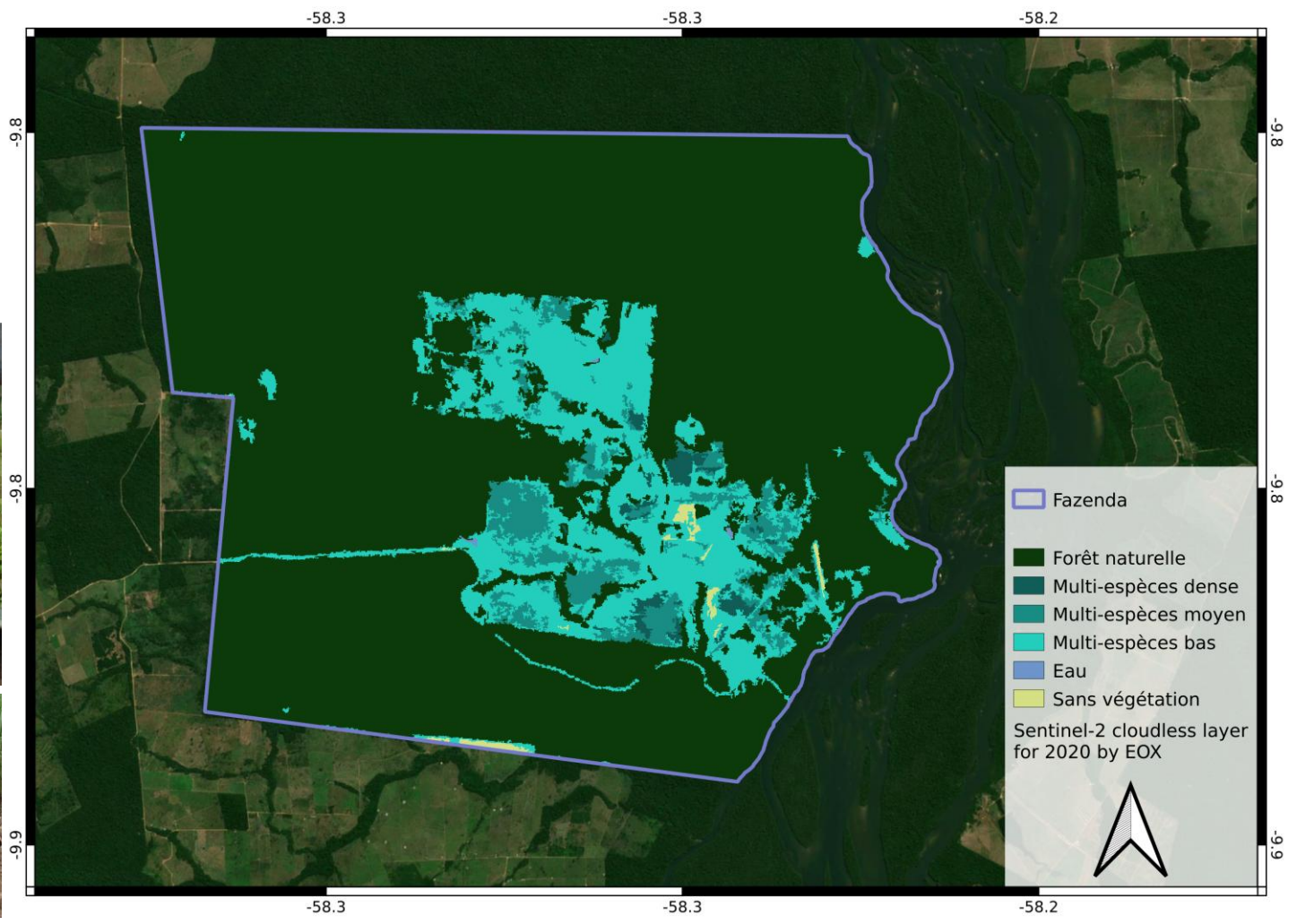




Carbon sink

Prospects and opportunities

- **Data digitization**
- **Geolocated** information system & online platform
- **Optimization** of low performance areas
- **Expansion** through groups project or replicability





Carbon sink Reforestation

The Fazenda nursery produces up to **50,000 plants** of **30 native species** each year.

Seedlings are sold to local operators as part of the local economic activity and is a **financial resource** for the Fazenda.

Since 2012, **120 ha of degraded riparian forest** (APP) have been **restored**.

Potential for expansion



A natural forest

Local resources



Natural forest Timber

Logging under **sustainable management plan**, validated by environmental authorities

5350 ha logged over 5 years followed by a period of 30 years without any activity for the reconstitution of the resource.

Demonstration site for good practices on **reduced impact logging** and timber traceability tools.

Monitoring the impact of logging on the ecology of the forest (TmFo).

Job creation in the local timber industry.



Natural forest

Brazilian nuts

Nut collection is carried out by the collectors' association of the neighboring land reform project. It has been supported by ONFB for 15 years.

On average, **15 tons of nuts collected per year**, with the possibility of an increase.

Harvesting is carried out within the framework of a specific **management plan** that takes into account biodiversity and the preservation of wildlife. It is correlated with the **timber exploitation**

Integration of the local population in the implementation of an economic and social project: the collect **generates additional income for the local population.**



An integral reserve

dedicated to biodiversity and ecotourism



Integral reserve

Biodiversity

The integral reserve is home to more than **2,000 listed species of fauna**, including 800 vertebrates and more than 1,000 invertebrates.

There are more than **500 species of trees**, more than **40 microscopic fungi** and more than **50 macroscopic fungi**.

Many new species to science are in the description phase.

More than 100 scientific articles and publications on the themes of biodiversity, reforestation, carbon, natural forest and sustainable development.

Research projects with applications in the fight against cancer and malaria

Partnerships with Brazilian and international universities



Among the fauna species listed, there are 500 species of birds, 160 of amphibians and reptiles and 60 of mammals (small and large).



Integral reserve

Ecotourism

A partnership with the experienced international operator: SouthWild. Cooperation with biodiversity research

Mainly foreign tourists, wildlife observers and mostly birdwatchers

Capacity: 5 triple rooms + 2 to 3 high standing double rooms with AC. Potential for expansion



Integral reserve Environmental education

Annual **environmental education** activities, welcoming schools in the region, teachers, students and small farmers.

Field classes : ecology, forest management, forest restoration, environment (Federal University of Mato Grosso and State University of Mato Grosso).

More than **10,000 students received**.



Sustainable development

Large projects



Example TerrAmaz



- Participatory territorial monitoring platform
- Coffee and livestock agroecological transition
- Support for Brazil nut processing and marketing and management capacity building (local association + indigenous reserve)
- Fire prevention
- Support for conversion via innovative financing systems
- Technical and economic guidelines on sustainable production systems

The TerrAmaz project will make it possible to support the Amazonian territories, on five pilot sites distributed in Brazil, Colombia, Ecuador and Peru, in the implementation of policies to **fight deforestation** and to support transition towards a **sustainable economic development model**.

TerrAmaz is part of France's commitments to an International **Alliance for the Conservation of Tropical Forests** and the national strategy to combat imported deforestation (SNDI).



Infrastructures

of the Fazenda



Infrastructures Equipments

Capacity for **80** people: more than 1,000 m² of buildings including 2 dormitories with 5 bedrooms each, 3 annex houses with 8 additional bedrooms, Caretaker's house, Refectory with equipped semi-industrial kitchen, support kitchen, office with 3 bathrooms , auditorium, mini laboratory.

A tower for internet receiving antennas, mobile network, connection to the electricity network

3 drinking water wells.

Enclosures for dairy cows and horses.

Shed for garage, equipment, tools and repair workshop.

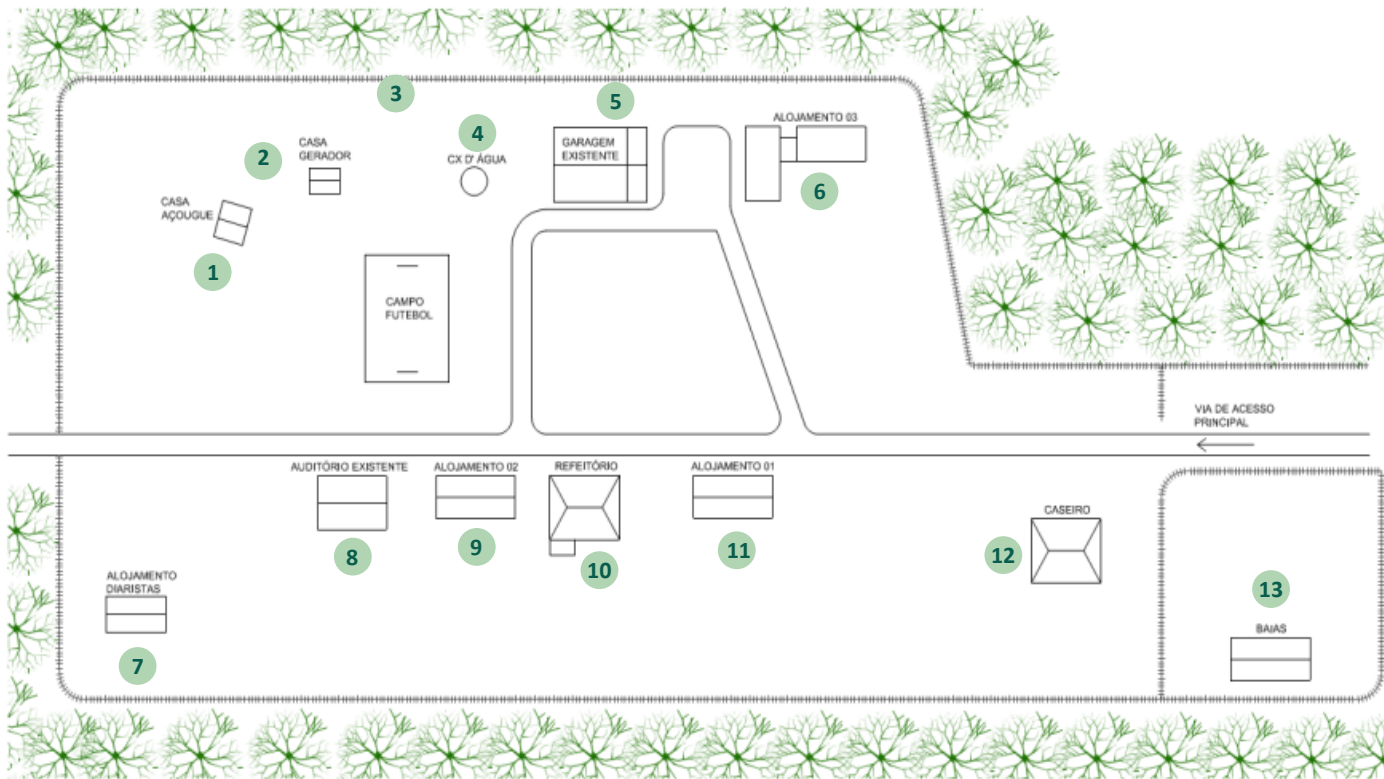
Nursery with production capacity of 50,000 plants per year, irrigation system from wells.





Equipments

- 1. Laboratory
- 2. Generator
- 3. Diesel tank
- 4. Drinking water tank
- 5. Equipment and vehicle shed + offices
- 6. Housing for employees and service providers (3 bdr) + 5 executive bedrooms
- 7. Motorcycle garage and vegetable garden



- 8. Auditorium (A/C) + 2 tourist double rooms (A/C)
- 9. 5 tourist triple rooms (A/C)
- 10. Kitchens and refectory
- 11. Housing for employees and service providers (5 bedrooms)
- 12. House "caseiro" (for family 4 people)
- 13. Dairy cow and horse enclosure



The team





Fazenda and ONF Brasil Local Team



Alan Bernardes,
CEO

Forest engineer and Msc in forest and environmental sciences. Technical manager and coordinator of the Fazenda for more than 9 years, he specializes in silviculture, logging, production of seedlings in nurseries, forest restoration and carbon monitoring inventories.



Saulo Thomas,
Local Integration director

Forest engineer, specialist in agroforestry systems and setting up projects. He has been coordinating the local integration and environmental education program at La Fazenda for over 6 years. He has been coordinating the implementation of the TerrAmaz project since 2020.



Kamila Prado,
Research Coordinator

With a PhD in Ecology and Biodiversity Conservation from the Federal University of Mato Grosso (UFMT), she has worked for over 10 years in ecological research and biodiversity monitoring, especially with birds in different Brazilian biomes. She develops biodiversity indicators focused on conservation, with an emphasis on ecological interactions, community composition, and the effects of environmental changes.



Erisvan Ferreira,
Forestry technician

Responsible for quality control at the Peugeot-ONF Forest Carbon Sink (PCFPO) and the São Nicolau Farm forest nursery. Possesses experience in forest harvesting, management of native and commercial forests, and conducting forest inventories, with a focus on sustainability and environmental conservation.



Gilberto Araújo,
Field team manager

Member of the ONF Brazil team since its beginnings in 1999, he has been coordinating the field teams of the Fazenda for more than 20 years and has extensive experience in agricultural and livestock practices, reforestation plantations and maintenance of infrastructure and tools.



**Field team,
stewardship and
maintenance**

Farm workers mainly from the neighboring assentamento with experience in the forest environment + kitchen support and maintenance coordinated by Alaide Araújo, chef at La Fazenda for 20 years



**Administrative, financial
and logistical support team**

Based in the Cuiabá office with experience in annual external audit (Mazars). Outsourced accounting and legal advice





Fazenda know-how

25 years of experience in the sustainable management of forest ecosystems



Forest inventories



Competence in the restoration of specific areas (erosion, wetlands, etc.)



Exploitation and marketing of timber



Certification process, relation with VVB



Team management for the follow-up of complex projects, the maintenance of natural sites, the safety of people and goods.



Rural development



Realization of plantations (from the nursery to securing the recovery)



Ability to replicate the project (carbon sink)



Ecotourism



Annex

Project history and pictures of the Fazenda





Case History



2003

End of trees' plantation phase

31/12/2003: end of « forest carbon sink » constitution and plantations

1999

Fazenda acquisition

Acquisition by ONF Brazil (subsidiary of ONFI) of the Fazenda São Nicolau with the funds of ONF and Peugeot.

2011

1st verification (VCS)

Issuance of 112 000 carbon credit VCU for voluntary market

2012

PETRA project

Innovative webmapping platform for rural landuse (4 years / FFEM funding).

2015

2nd verification (VCS)

Issuance of 254 000 carbon credit VCU for voluntary market

2016

Partnership with SEMA-MT

technical and scientific partnership agreement, signed with State Secretary for Environnement





Case History

2017

ONFB membership of
“PCI state committee »

Mato Grosso State Low
Carbon Development
Strategy (Produce,
Conserve, Include)

2020

Terramaz

Support the Amazonian
territories in the
implementation of policies
to combat deforestation
and transition towards a
model of sustainable
economic development.
AFD donor 2020-2024.

2022

3rd verification VCS

Digitalized inventory and
database
VVB auditing field visit

2024

3rd verification (VCS)

Issuance of
74 000 carbon credit VCU
for voluntary market

Buffer release
+15 000 VCUs

Elected **Best Carbon Credit
Project Developer**
(Removal) on ESG
Investing Carbon Awards

2025

4th verification

initiated
Expected Issuance of
100 000 carbon credit VCU
for voluntary market





Contact

alan@onfbrasil.com.br